

2500 Series



- Female thread 3/4", 1"
- Globe configuration
- Body in PVC

The 2500 series valves are ideal for small- and medium-sized systems.

The double rib diaphragm ensures high performance without water leaks for long periods of time even in the presence of debris.

Features

- Internal/External manual bleed
- Option flow control
- Slow, anti-water hammer closing
- Double beaded Santoprene diaphragm
- Captive Solenoid (the plunger is retained in the solenoid)

Pressure Loss (bar)

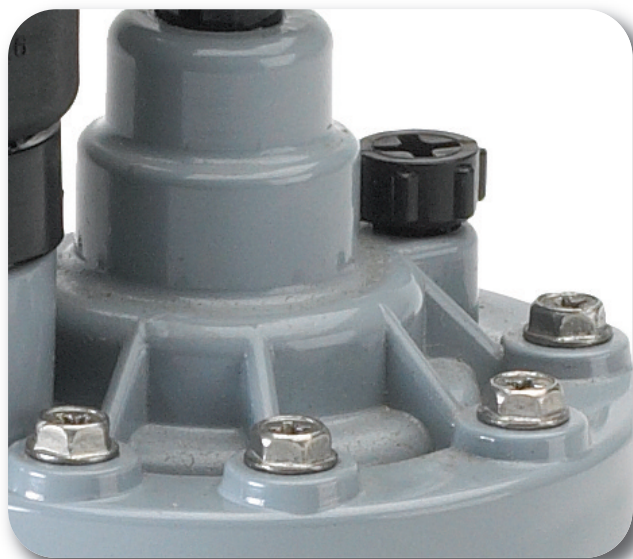
m³/h	0,06	0,45	1,2	2,4	3,6	4,8	6,0	7,2
l/min	1	8	20	40	60	80	100	120
3/4"	0,19	0,23	0,26	0,29	0,18	0,29	0,30	0,60
1"	0,37	0,27	0,20	0,16	0,14	0,23	0,37	0,52

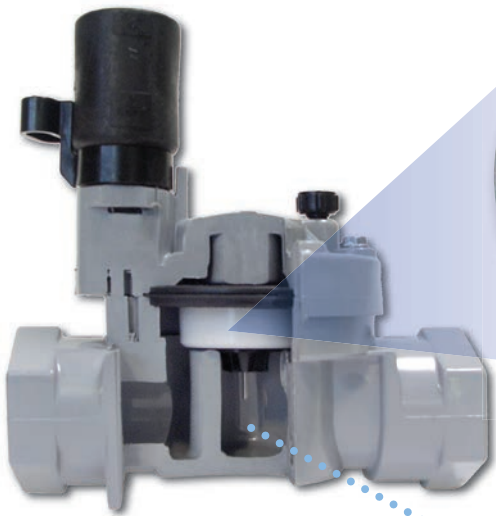
Specifications

- Flow range: 0,06 – 7,2 m³/h
(1 – 120 l/min)
- Operating pressure: 0,7 – 10,0 bar
- Solenoid 24VAC – 50Hz
(24VAC – 60Hz on request)
 - Inrush current 0,34 A
 - Holding current 0,20 A

Options

- DCL latching solenoid





Guaranteed high tolerance to debris without water leaks



Codification

Code	Description
2507T-50H	Valve 2500 ¾" female, without Flow Control
2507TF-50H	Valve 2500 ¾" female, Flow Control
2500MT	Valve 2500 1" female, without Flow Control
2500MTF	Valve 2500 1" female, Flow Control